

Flûte I

Sonate en trio N° 4

pour trois flûtes traversières sans basse

Op. VII - Paris, 1725

Joseph Bodin de Boismortier
(1689-1755)

Doucement

4

8

12

15

19

Flûte I

Joseph Bodin de Boismortier,
Sonate en trio pour trois flûtes traversières - Op. VII no 4

2

22

26

30

34

38

42

46

49

Doux

The image shows a page of musical notation for Flute I, measures 22 through 49. The music is written on a single staff in treble clef with a key signature of one flat (B-flat). The notation includes various rhythmic values, slurs, and trills. Measure numbers 22, 26, 30, 34, 38, 42, 46, and 49 are indicated at the beginning of their respective lines. The word "Doux" is written below the final measure (49). The page number "2" is in the top right corner.

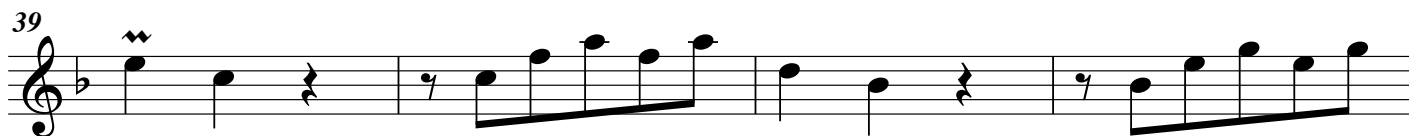
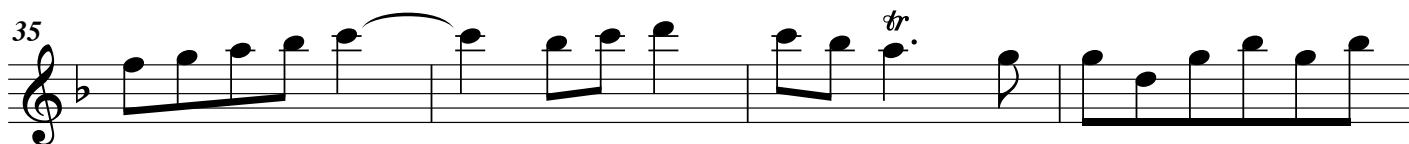
Courante

The musical score for Flute I, titled "Courante" by Joseph Bodin de Boismortier, is presented in seven staves. The key signature is one flat (B-flat major) and the time signature is 3/4. The score includes various musical notations such as slurs, trills, and ornaments. The first staff begins with a treble clef, a key signature of one flat, and a 3/4 time signature. The music consists of eighth and sixteenth notes, with some notes marked with ornaments. The second staff starts at measure 4 and continues the melodic line. The third staff starts at measure 8 and features a slur over a group of notes. The fourth staff starts at measure 12 and includes a trill. The fifth staff starts at measure 16 and features a long slur and a trill. The sixth staff starts at measure 20 and includes a repeat sign and a slur. The seventh staff starts at measure 23 and includes several ornaments. The score concludes with a double bar line.

Flûte I

Joseph Bodin de Boismortier,
Sonate en trio pour trois flûtes traversières - Op. VII no 4

4



Allemande

Gravement

The musical score for Flute I, titled "Allemande" by Joseph Bodin de Boismortier, is presented in G minor and 3/4 time. The tempo is marked "Gravement". The score consists of seven staves of music. The first staff begins with a treble clef, a key signature of one flat (B-flat), and a common time signature (C). The music features a variety of rhythmic patterns, including eighth and sixteenth notes, and rests. Notable musical elements include slurs, trills (marked with a double wavy line and "tr"), and ornaments (marked with a double wavy line). The score is divided into measures, with measure numbers 3, 5, 7, 11, and 13 indicated at the beginning of their respective staves. The piece concludes with a double bar line and repeat dots at the end of the seventh staff.

Flûte I

Joseph Bodin de Boismortier,
Sonate en trio pour trois flûtes traversières - Op. VII no 4

6

Musical score for Flute I, measures 15-21. The music is in G major (one sharp) and 3/4 time. Measure 15 starts with a treble clef, a key signature of one sharp (F#), and a common time signature. The melody begins with a quarter note G4, followed by eighth notes A4, B4, C5, and D5. Measure 16 continues with eighth notes E5, F#5, G5, and A5. Measure 17 has a quarter rest, followed by eighth notes B5, C6, and D6. Measure 18 has a quarter rest, followed by eighth notes E6, F#6, and G6. Measure 19 has a quarter rest, followed by eighth notes A6, B6, and C7. Measure 20 has a quarter rest, followed by eighth notes D7, E7, and F#7. Measure 21 has a quarter rest, followed by eighth notes G7, A7, and B7, ending with a double bar line and repeat dots.

Premier Menuet

Musical score for Premier Menuet, measures 1-11. The music is in G major (one sharp) and 3/4 time. Measure 1 starts with a treble clef, a key signature of one sharp (F#), and a 3/4 time signature. The melody begins with a quarter note G4, followed by eighth notes A4, B4, and C5. Measure 2 continues with eighth notes D5, E5, and F#5. Measure 3 has a quarter rest, followed by eighth notes G5, A5, and B5. Measure 4 has a quarter rest, followed by eighth notes C6, D6, and E6. Measure 5 has a quarter rest, followed by eighth notes F#6, G6, and A6. Measure 6 has a quarter rest, followed by eighth notes B6, C7, and D7. Measure 7 has a quarter rest, followed by eighth notes E7, F#7, and G7. Measure 8 has a quarter rest, followed by eighth notes A7, B7, and C8. Measure 9 has a quarter rest, followed by eighth notes D8, E8, and F#8. Measure 10 has a quarter rest, followed by eighth notes G8, A8, and B8. Measure 11 has a quarter rest, followed by eighth notes C9, D9, and E9, ending with a double bar line and repeat dots.

Flûte I

Joseph Bodin de Boismortier,
Sonate en trio pour trois flûtes traversières - Op. VII no 4

7

Musical score for Flute I, measures 15-24. The music is in G major and 3/4 time. It features a series of eighth-note patterns with trills and slurs. Measure 15 starts with a trill on G4. Measure 20 has a trill on G4 and a slur over a descending eighth-note line. Measure 24 ends with a repeat sign.

2^e Menuet

Musical score for the 2^e Minuet, measures 1-22. The music is in G major and 3/4 time. It features a series of eighth-note patterns with trills and slurs. Measure 1 starts with a trill on G4. Measure 5 has a first ending with a trill on G4. Measure 10 has a long slur over a descending eighth-note line. Measure 14 has a trill on G4. Measure 18 has a long slur over a descending eighth-note line. Measure 22 ends with a repeat sign and the instruction "Reprendre le Premier Menuet".